

**LEGEND:**

- ZONES
- COMMERCIAL
- DEVELOPMENT AREA
- COMMERCIAL/RESIDENTIAL
- RESIDENTIAL (GROUP A)
- RESIDENTIAL (GROUP B)
- GOVERNMENT, INSTITUTION OR COMMUNITY
- OPEN SPACE
- OTHER SPECIFIED USES
- GREEN BELT
- UNDETERMINED
- 100m BOUNDARY FOR LANDSCAPE IMPACT ASSESSMENT
- WORKS AREA/SURFACE CONSTRUCTION ACTIVITIES
- PROPOSED STATION
- STATION ENTRANCE
- VENT SHAFT
- PROPOSED ABOVE GROUND STRUCTURES
- UNDERGROUND STRUCTURE

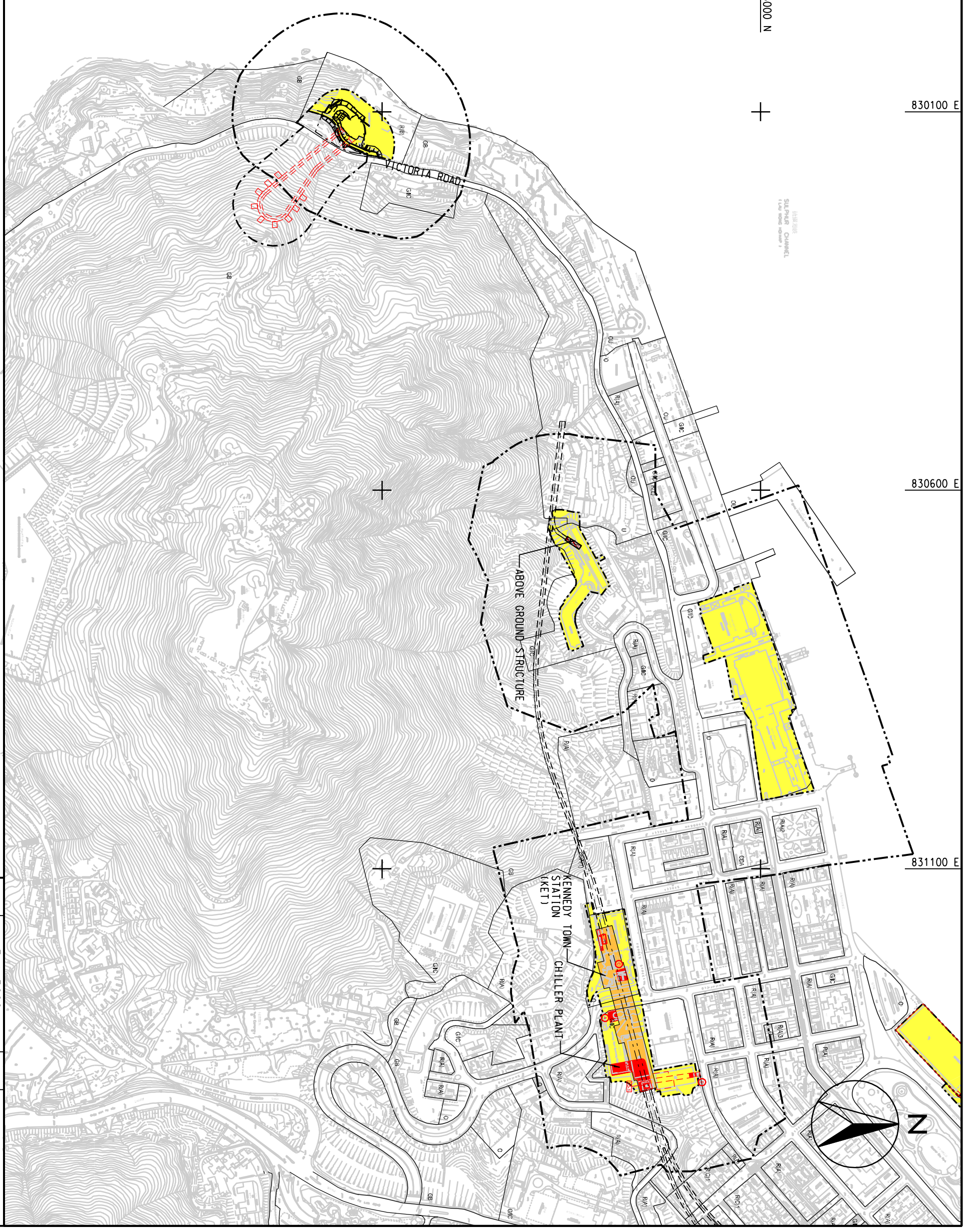
815500 N

816000 N

830100 E

830600 E

831100 E



AECOM

ENSR  
MAUNSELL  
ENSR Asia (HK) Ltd.

WEST ISLAND LINE ENVIRONMENTAL IMPACT ASSESSMENT

PLANNING & DEVELOPMENT FRAMEWORK (OZP) – KENNEDY TOWN STATION

2008-8-13 14:40:54 LIC2

p:\projects\60017115\_DRAWING\Figure\Fig 5.1.5.dgn

SCALE	A3 1:5000	DATE	DEC. 2007
CHECK	KNKY	DRAWN	LLJ
JOB NO.	60017115	DRAWING NO.	FIG 5.1.5
		REV	A

(SHEET 1 OF 3)